

SHERMAN PARK

NEIGHBORHOOD MEETING

Date: Thursday, January 12, 2017

Time: 6:00 p.m.

Location: John Boner Neighborhood Centers
2236 East 10th Street
Indianapolis, IN 46201

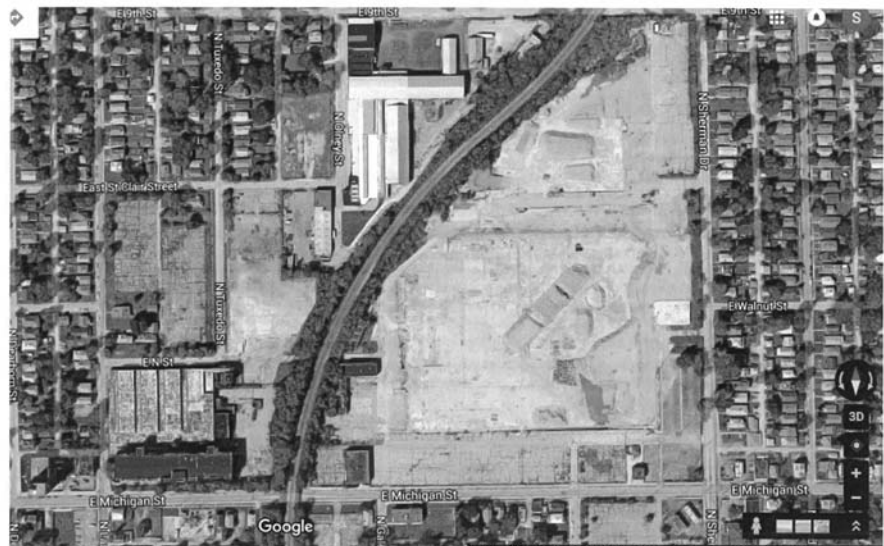
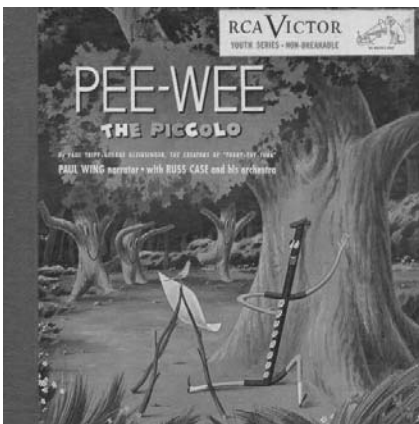
Moderator: John Franklin Hay
Executive Director
Near East Area Renewal

The City of Indianapolis has been exploring options for Criminal Justice Reform. This reform includes both policy changes and physical building changes. Sherman Park is one of three sites under consideration for new buildings.

The Sherman Park Project Partners will host a community information session to allow neighbors to hear the results from the Criminal Justice Reform Task Force and ask questions about what this could mean for Sherman Park.

It is vitally important to have neighbors understand what the opportunities and challenges are of utilizing part of Sherman Park for this purpose. Please take some time to review the recommendations of the Criminal Justice Reform Task Force and attend this meeting to provide feedback to the City of Indianapolis.

If you are unable to attend the meeting, please send your questions or comments to CoraLyn Turentine, Director of Neighborhood Engagement at cturentine@jbncenters.org or 317.808.2336 before January 12, 2017.



At a size of 52 acres, Sherman Park is home to one of the largest industrial opportunities in the city of Indianapolis.

The property was originally developed in the 1920s as the headquarters for RCA. In 1948, the very first 45 RPM record, called Pee-Wee the Piccolo, was made at the RCA site here on the near Eastside of Indianapolis.

In 1986, RCA was acquired by General Electric Co. A year later, GE sold the former RCA site to Thomson Consumer Electronics. At its peak in the 1950s, the plant employed 8,200 people, many of them producing TV components. These jobs served to stabilize the near eastside neighborhood. But over the years, Thomson sent those jobs to Mexico and in 1994, the company moved its headquarters from Sherman Park to Carmel, Indiana.

In the late 1990s, Thomson moved its injection-molding operation, and the last of its jobs at Sherman Park, to Mexico. The loss of these jobs caused Sherman Park to shut down, with no identified owner to take control of such a large piece of land. Over the next four decades, the loss of jobs contributed to a destabilizing effect on the near Eastside, with unemployed factory workers leaving the neighborhood in search of employment.

Sherman Park Project Partners



For more information about the Criminal Justice Reform Task Force, please visit criminaljusticereform.indy.gov